

# Eastside Water Management Area

## BACKGROUND

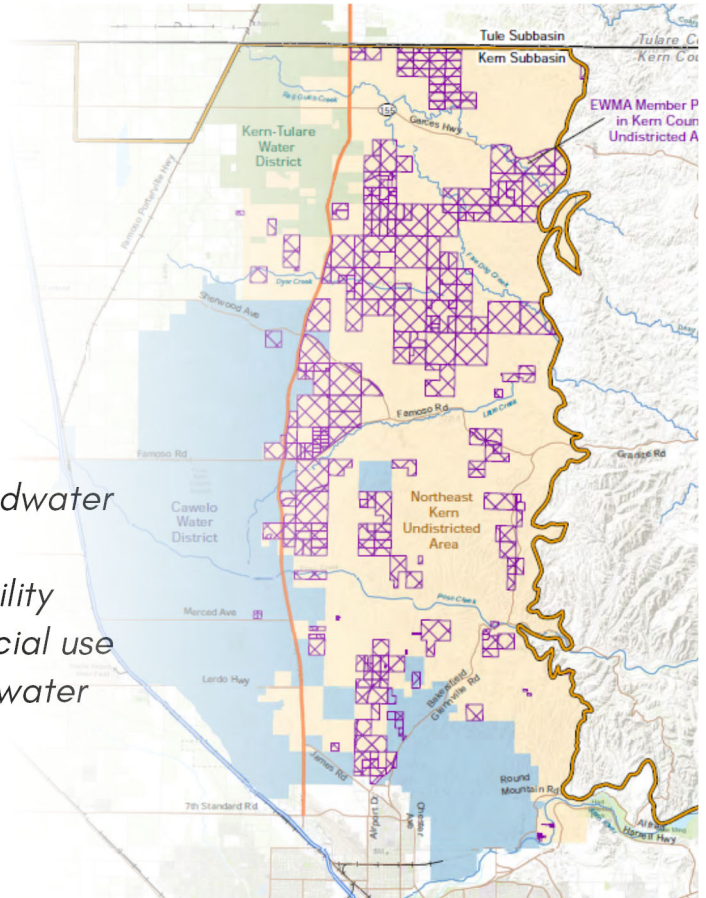
- ▶ Formed in May 2018
- ▶ 43,000 acres
- ▶ 56 landowners
- ▶ 7-Member Board

## SUSTAINABILITY GOAL

*“Achieve documented sustainable groundwater management within 20 years following adoption of the Groundwater Sustainability Plan, and preserve the long-term beneficial use and viability of locally-managed groundwater resources into the future.”*

## OUTREACH

- ▶ 3 Public Workshops
- ▶ 4 Flyers to 1,000+ Landowners
- ▶ Direct Outreach with Membership
- ▶ Landowner Surveys



## WATER BUDGET

Change in Storage Shows a Deficit  
Current Period: 9,000–23,000 AF/YR Deficit

## COORDINATION WITH ADJACENT WATER DISTRICTS

- ▶ Multiple Meetings with Cawelo WD and Kern-Tulare WD
- ▶ Resulted in Joint Changes to GSPs
- ▶ Commitment to Work together in the Future

## PROJECTS

- ▶ Development of Oilfield Produced Water
- ▶ Surface Runoff Capture
- ▶ Data Gap Projects:
  - ▶ Additional Groundwater Quality Analysis
  - ▶ Installation of Pressure Transducers

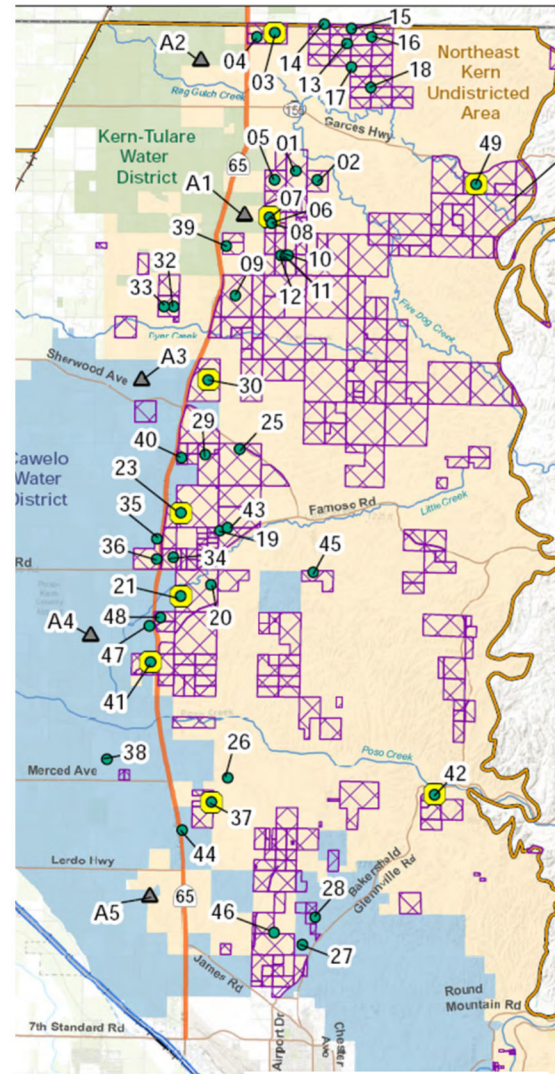
## MANAGEMENT ACTIONS

- ▶ Pumping Reduction
- ▶ Sharing of Yield (Cannot Exceed Well Thresholds)
- ▶ Incentives to Reduce Irrigation

## SUSTAINABLE MANAGEMENT CRITERIA

- ▶ 9 Representative Wells
- ▶ Monitoring Levels and Quality

## Monitoring Network



## GLIDE PATH

