

TCWD Management Area Plan Summary

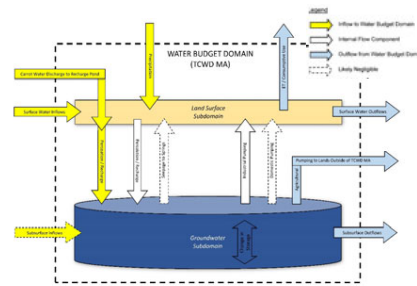
SUSTAINABILITY GOAL

The Sustainability Goal for the Tejon-Castac Water District Management Area is to maintain an economically-viable groundwater resource that supports the current and future beneficial uses of groundwater by utilizing the area's groundwater resources within the local sustainable yield. Long-term groundwater sustainability will be evaluated relative to locally-defined sustainability criteria and maintained through increased groundwater monitoring and the implementation of projects and management actions within the Management Area. This Management Area Plan has been developed and will be implemented consistent with the natural resource values of the Tejon Ranch Conservation and Land Use Agreement.



MANAGEMENT AREA WATER BUDGET

- Analytical water budget developed, with certain components quantified
- TCWD MA functions largely in a natural condition
- **Historical Water Budget**
 - TCWD MA not in a condition of critical overdraft
 - Sustainable yield:
 - "Native Yield" range (0.15-0.30 AFY/ac) = 2,900 to 5,800 AFY
The Conservation & Land Use Agreement requires protection of the local vegetation. Therefore, the "native yield" is very important.
 - Precipitation also a supply source, 0.79 AFY/ac = 15,150 AFY
- **Projected Water Budget**
 - Both inflows and outflows expected to increase under climate change scenarios
 - Net change is uncertain, but no water supply "deficit" is expected
 - TCWD MA will continue to function in natural condition



Conceptual Water Budget Components/Linkages

TCWD and TRC reserve the right to pump groundwater and/or develop surface water resources within the TCWD MA in the future, subject to the terms of the C&LU Agreement.



PROJECTS AND MANAGEMENT ACTIONS (P/MAs)

- Vast majority of lands in TCWD MA are covered by *Tejon Ranch Conservation and Land Use Agreement*
- Because conditions are sustainable, P/MAs are not necessary to ensure sustainability; no "Glide Path" is established
- However, two P/MAs with supply augmentation benefits are included in the MA Plan to support sustainability:
 - Conversion of Granite quarry to Sycamore Reservoir (in partnership with AEWSD for up to ~6,000 AFY)
 - Recharge of Carrot Wash Water, currently being implemented by TRC in lands just outside of TCWD MA (~300 AFY)

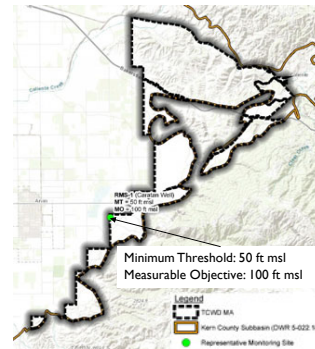


TCWD and TRC reserve the right to pump groundwater and/or develop surface water resources within the TCWD MA in the future, subject to the terms of the C&LU Agreement.



SUSTAINABLE MANAGEMENT CRITERIA (SMCs)

- SMCs include Undesirable Results, Minimum Thresholds, Measurable Objectives, and Interim Milestones for applicable and relevant Sustainability Indicators
- SMCs were set at the Caratan Well for *Chronic Lowering of Groundwater Levels* based on water levels for wells in adjacent AEWSA area
- All of the other Sustainability Indicators are either not applicable (e.g., seawater intrusion, water quality and interconnected surface water) or use the Chronic Lowering of Groundwater Levels Sustainability Indicator as a proxy (e.g., storage and subsidence)

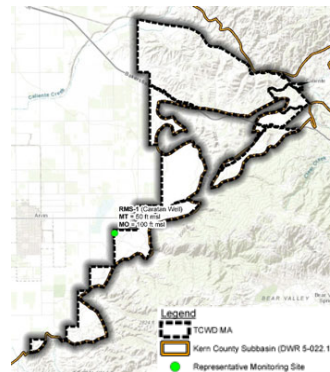


Minimum Threshold and Measurable Objective for Chronic Lowering of Groundwater Levels at the Single Representative Monitoring Site within the TCWD Management Area

The KGA "Managed Monitoring Area" concept applies to TCWD Management Area. Under this concept, SMCs and monitoring are not necessary.

MONITORING NETWORK

- A monitoring network consisting of a single well, the Caratan Well, was established
- Even with a single well in the TCWD MA, the monitoring network meets the recommended well density from the DWR Monitoring Networks BMP
- TCWD will evaluate options to add additional monitoring wells



Monitoring Network

The KGA "Managed Monitoring Area" concept applies to TCWD Management Area. Under this concept, SMCs and monitoring are not necessary.